

# POWER SOLUTIONS

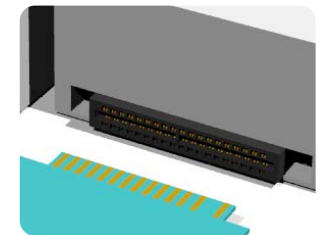
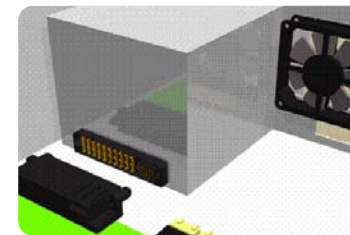


## POWER SOLUTIONS INFORMATION

- Documentation
  - Power Solutions Brochure
  - Power Card Edge Datasheet
  - PwrBlade® Datasheet
  - HCI® Datasheet
  - Hard Metric High Power Datasheet
  - Power D-Sub Brochure
  - USB+Power Datasheet
  - Metral® Power Datasheet

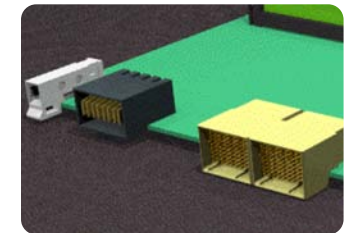
## POWER SUPPLY INTERFACE

- Power Card Edge
- PwrBlade® Connector System
- HCI® Connector System



## HOST-TO-CARD

- Hard Metric (HM) High Power
- PwrBlade® & HCI® Connector Systems
- Metral® Power Connectors



## POWER CABLES

- PwrBlade® Cables
- Pwr TwinBlade™
- USB + Power
- Power D-Sub;  $\mu$ TCA





## POWER SOLUTIONS INFORMATION

- FCI's core competency is cost effective stamped and formed contact technology for power distribution and power delivery applications.
- PwrBlade® is the industry-standard power supply interconnect and is designed to handle DC, AC and distributed power.
- Per the matrix below, FCI is leveraging its power expertise and expanding into lower profile and higher density board mount and cable power solutions.

### FCI PWR DENSITY MATRIX

Power Product	Application Type	Height Above PCB	Amps/ Contacts	Pwr Contacts/ Column	Pwr Pitch (mm)	Linear Current Density (A/inch)
Power Card Edge	Pwr Supply	9.0	7	2	2.54	145
Metral Power - 4 Row	Host-to-Card	11.2	4	4	6.00	135
HM High Power - 1x2	Host-to-Card	11.5	40	1	6.00	339
HM High Power - 2x2	Host-to-Card	11.5	20	2	6.00	339
HM High Power - 2x3	Host-to-Card	11.5	20	2	6.00	254
PwrBlade - 2 Contacts	Pwr Supply & Cable	12.6	48	1	6.35	384
PwrBlade - 10 Contacts	Pwr Supply & Cable	12.6	30	1	6.35	133
Metral Power - 5 Row	Host-to-Card	13.2	4	5	6.00	169
Pwr TwinBlade	Pwr Cable	16.7	100	1	20.10	253
HCI - 2 Contacts	Pwr Supply	19.8	82	1	6.00	694
HCI - 10 Contacts	Pwr Supply	19.8	50	1	6.00	235

