



Product
Change
Notification
AM-03-0093

Product:	Selected Dubox Single Row Vertical PCB-receptacles	Part Numbers Concerned:	See attached base p/n list
Originator:	J. F. O'Brien	Issue Date:	10/28/03
		Total Pages:	2

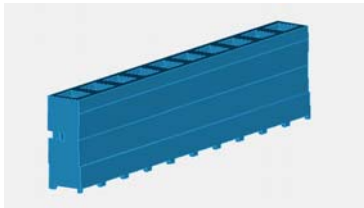
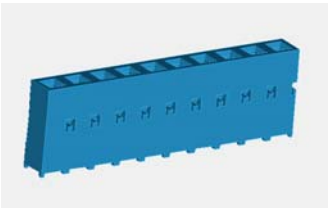
Background:

The housing for selected Dubox Single Row Vertical PCB-receptacles currently manufactured in Europe, will be changed to have molded openings on both sides of the housing versus the current style, which features openings on 1 side only. Please reference the pictures below.

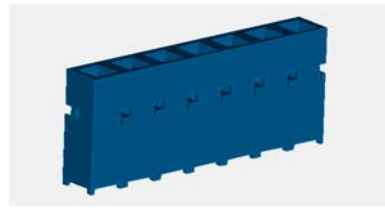
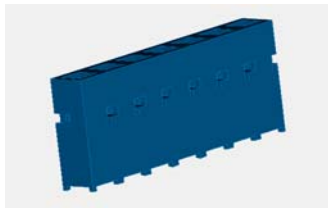
Nature of change:

Openings will be molded on both sides of the housing, to aid in part orientation to the assembly machine, and to simplify the FCI manufacturing process. These openings are used to lock the contact into the housing.

Current housing as molded today.



New housing as it will be molded after 1/1/04.



(Ignore the color difference between the old and the new housing. There will be no impact on the color, 8.5mm height will remain blue, and 7.5mm height will remain grey.)

Implementation date:

On January 1st, 2004, all new orders received that require our manufacturing plant to build will be delivered with molded opens on both sides of the housing. For a period up to 6 months it may still be possible to receive the old style housing.

Impact:

All base part numbers listed below will be affected. The change will have "NO" impact on the functionality of the product and no returns will be accepted.

Base p/n affected

base p/n	connector version	old housing	new housing
65235	vcc sr 7.0mm tht	opening on one side	openings on both sides
73389	vcc sr 7.0mm tht	opening on one side	openings on both sides
76341	vcc sr 7.0mm tht	opening on one side	openings on both sides
76343	vcc sr 7.0mm tht	opening on one side	openings on both sides
77328	vcc sr 7.0mm tht	opening on one side	openings on both sides
77388	vcc sr 7.0mm tht	opening on one side	openings on both sides
77701	vcc sr 7.0mm tht	opening on one side	openings on both sides
77793	vcc sr 7.0mm tht	opening on one side	openings on both sides
87627	vcc sr 7.0mm tht	opening on one side	openings on both sides
89842	vcc sr 7.0mm tht	opening on one side	openings on both sides
95296	vcc sr 7.0mm tht	opening on one side	openings on both sides
71920	vcc sr 8.5mm tht	opening on one side	openings on both sides
75915	vcc sr 8.5mm tht	opening on one side	openings on both sides
77424	vcc sr 8.5mm tht	opening on one side	openings on both sides
87654	vcc sr 8.5mm tht	opening on one side	openings on both sides
87698	vcc sr 8.5mm tht	opening on one side	openings on both sides
89879	vcc sr 8.5mm tht	opening on one side	openings on both sides
89893	vcc sr 8.5mm tht	opening on one side	openings on both sides
89885	vcc sr 8.5mm tht	opening on one side	openings on both sides
91622	vcc sr 8.5mm tht	opening on one side	openings on both sides
95200	vcc sr 8.5mm tht	opening on one side	openings on both sides
95234	vcc sr 8.5mm tht	opening on one side	openings on both sides
98409	vcc sr 8.5mm tht	opening on one side	openings on both sides
56600	vcc sr 7.0mm smt	opening on one side	openings on both sides
73379	vcc sr 7.0mm smt	opening on one side	openings on both sides
91601	vcc sr 7.0mm smt	opening on one side	openings on both sides
91614	vcc sr 7.0mm smt	opening on one side	openings on both sides