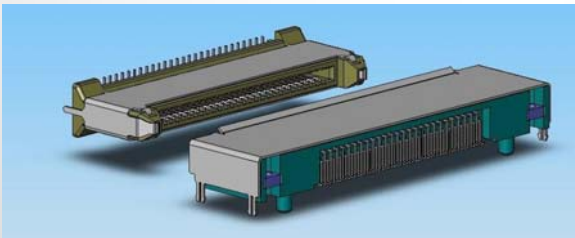
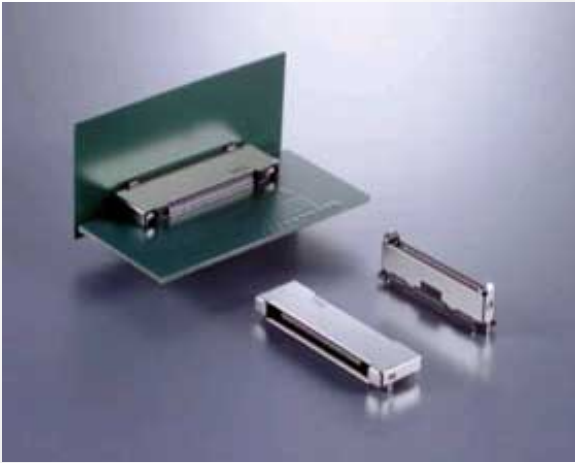


WM2 SERIES CONNECTORS

Product Bulletin



Serving the next generation of notebook bay units, JAE has developed the WM2 series. The connectors are USB2.0 and SATA transmission compatible, and provide superior EMI shielding from a shell-to-shell (ground) first connection design. The connectors are guaranteed up to 10,000 cycles and allow for easy blind mating.

The series consists of a vertical, PCB-mounted plug and a right-angle, PCB-mounted receptacle. The contacts are gold-plated.

FEATURES

- PCB-to-PCB Connector
- 0.5mm (.020") pitch
- USB2.0 and SATA compatible
- Blind mating (± 2.0 mm)
- 2-level hot plug contact
- EMI Shielded
- 10,000 cycle guaranteed
- **Lead-free/RoHS compliant**