

MXC* Optical Interconnect Solutions **molex**[®]

Enabling the networking world's newest open-compute platforms with streamlined design and superior scalability, the MXC* Optical Interconnect Solution, with VersaBeam™ expanded-beam MT technology, delivers cutting-edge high-density performance



MXC Cable Assembly

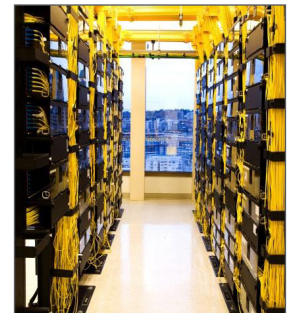
Features and Benefits

Supports up to 64 fibers per ferrule	Provides options for different transmission link distances using OM3, OM4, multimode and singlemode [†] fibers. Allows system architects flexibility to meet specific bandwidth and distance requirements supporting both onboard multimode VCSEL and singlemode silicon photonics technologies
Simplified panel-mounted receptacle and assembly design with greatly reduced component count	Reduces cost, complexity and footprint by eliminating numerous components compared to MPO/MTP ^{††} connector-to-adapter-to-connector interface designs
Anti-snag thumb-latch design	Provides latching and unlatching ease-of-use. Delivers 15% increased density compared to MPO/MTP push/pull style latches
Lower mating force than MPO/MTP. Spring force has not increased with the higher fiber count	Offers greater density without impacting mechanical design requirements. Ideal for backplane applications
Adjustable strain relief with optional FlexiBend™ boot	Makes cable routing easier. Can bend cable as necessary within space constraints without damaging cable
Recessed ferrule with VersaBeam™ expanded-beam MT technology	Protects the interface from damage. Expanded-beam connection is less sensitive to dust contamination, fiber damage and is easier to clean compared to standard MT ferrules
MXC-to-MPO/MTP fan-out cable configurations available	Allow for conversion from the MXC interface to individual MPO/MTP and LC connectors for connections to QSFP, CXP or SFF active optical modules
Standard MT-ferrule compatible	For use in applications not requiring expanded-beam MT connections
Supports round multi-fiber cable constructions from 12 to 64 fibers	Eases multi-fiber cable management compared to flat-ribbon cable on equipment front panels. Will eventually support a range of cable diameters from 2.00 to 5.50mm for fiber counts from 12 to 64 fibers

Applications

Telecommunications/Networking/Cloud Computing

- Hubs
- Servers
- Storage
- Open-Compute Architectures
- Disaggregated-Rack Architectures



Telecommunication Servers



Cloud Computing

*MXC is a trademark of US Conec Ltd.

[†]Singlemode currently in development

^{††}MTP is a registered trademark of US Conec Ltd.

MXC* Optical Interconnect Solutions **molex**[®]

Specifications

Reference Information

Packaging: Bag
 Mates With: MXC connector to MXC receptacle only
 Use With: Cable configurations with MPO/MTP[†], LC, VersaBeam[™] POD, MT and other optical interconnects.
 Designed In: Millimeters
 RoHS: Yes
 Halogen Free: No

Optical

Mating Force:
 VersaBeam[™] Expanded-Beam MT: 0.5kg
 Durability (min.): 50 cycles — Per Telcordia GR-1435
 Insertion Loss (IL) (max.):
 Multimode Fibers — 1.2 dB
 Singlemode Fibers — 1.5 dB^{††}
 Return Loss:
 Multimode — -20 dB
 Singlemode — -20 dB^{††}

Physical

Housing Material: Polymer
 Housing Color:
 Aqua, Green or Black, others upon request
 Ferrule: VersaBeam[™] Expanded-Beam MT
 Operating Temperature: -10 to +60°C

Ordering Information

Generic Cable Assemblies

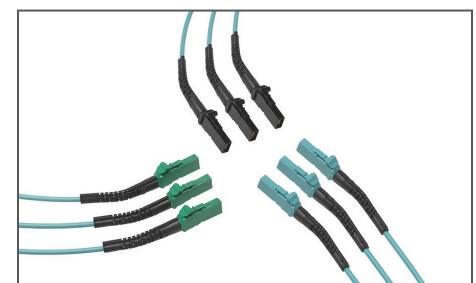
Part No.	Description	Length (m)	Fiber Count	Fiber Type	Boot Type	Color
106210-1102	MXC Cable Assembly	10.0	32	Multimode OM3	FlexiBend [™]	Aqua
106210-1100		100.0		Multimode OM	Straight	
106210-6021		3.0	48	Multimode OM#		
106210-5003	MXC to [3] MPO (QSFP) Fan-Out Cable		24			

Kit for use with Avago MiniPOD and MicroPOD^{**}

Part No.	Description	Length (m)	Fiber Count	Fiber Type	Boot Type	Color
106210-1103	MXC Cable Assembly	10.0	12	Multimode OM3	Straight	Aqua
106210-1104	MXC Receptacle to VersaBeam [™] POD	0.5			N/A	

Kit for use with 25G Mid-Board Optical Modules (FCI LEAP[‡] On-Board Transceiver, Finisar[§] 25G BOA, TE CoolBit^{***} Mid-Board Optical Transceiver)

Part No.	Description	Length (m)	Fiber Count	Fiber Type	Boot Type	Color
106210-1105	MXC Cable Assembly	10.0	24	Multimode OM3	Straight	Aqua
106210-3005	MXC Receptacle to MT Ferrule	0.5			N/A	



MXC Connectors with FlexiBend[™] boots

*MXC is a registered trademark of US Conec Ltd.

†MTP is a registered trademark of US Conec Ltd.

††Singlemode currently in development. Optical performance parameters are targets, final specifications to be determined (TBD)

**MiniPOD and MicroPOD are trademarks of Avago Industries and may be trademarked in other jurisdictions

‡Leap is a registered trademark of FCI and may be registered in other jurisdictions

§Finisar is a registered trademark of Finisar Corp.

***Coolbit is a registered trademark of Tyco Electronics Corp.

www.molex.com/link/mxcoptical.html