

NEW PRODUCT RELEASE

Richco Inc. has expanded their line of Blind Hole Mounted Circuit Board Supports. Introducing the BHC1, BHL1 and BHDL1 series of Blind Hole Circuit Board Supports designed to fit into a .250" diameter hole. The current offering snaps into a .312" diameter hole. The Blind Hole Circuit Board Support line offers a standoff that can be used in an application where a blind hole is present. The "barbs" flex upon entry into the hole and grip the inside walls of a blind hole. These supports could also be used in an application with a through hole. The Blind Hole Circuit Board Support provides an extremely strong hold.



**BLIND HOLE
CIRCUIT BOARD SUPPORTS**

PART FEATURES

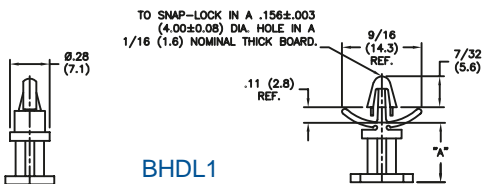
- Barbed chassis mount
- Locking and non-locking bayonet nose and arrowhead panel mount

BENEFITS

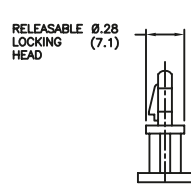
- No through hole required
- Varying options for panel mounting

TARGET MARKETS

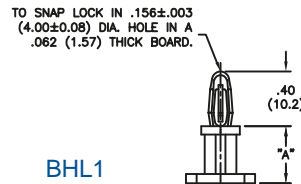
- Electronics



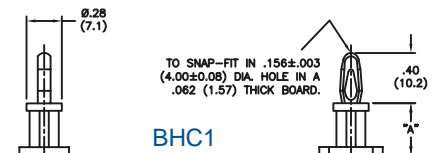
BHDL1



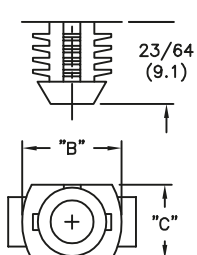
BHL1



BHC1



Material: Nylon 6/6, RMS-01
Color: Natural



BHL Series Part No.	BHDL Series Part No.	BHC Series Part No.	Standard Pack: 1000 per bag			Hole Dia. ±.003 (0.08)	Panel Thickness
			"A" ±.015 (0.4)	"B" ±.015 (0.4)	"C" ±.015 (0.4)		
BHL-3-01	—	BHC-3-01	3/16 (4.8)	7/16 (11.1)	5/16 (7.9)	.312 (7.92)	1/4 (6.4) Min.
BHL-4-01	BHDL-4-01	BHC-4-01	1/4 (6.4)				
BHL-6-01	BHDL-6-01	BHC-6-01	3/8 (9.5)				
BHL-7-01	BHDL-7-01	BHC-7-01	7/16 (11.1)				
BHL-8-01	BHDL-8-01	BHC-8-01	1/2 (12.7)				
BHL-10-01	BHDL-10-01	BHC-10-01	5/8 (15.9)				
BHL-12-01	BHDL-12-01	BHC-12-01	3/4 (19.1)				
BHL-14-01	BHDL-14-01	BHC-14-01	7/8 (22.2)				
BHL1-3-01	—	BHC1-3-01	3/16 (4.8)				
BHL1-4-01	BHDL1-4-01	BHC1-4-01	1/4 (6.4)				
BHL1-6-01	BHDL1-6-01	BHC1-6-01	3/8 (9.5)	3/8 (9.5)	17/64 (6.7)	.250 (6.35)	
BHL1-7-01	BHDL1-7-01	BHC1-7-01	7/16 (11.1)				
BHL1-8-01	BHDL1-8-01	BHC1-8-01	1/2 (12.7)				
BHL1-10-01	BHDL1-10-01	BHC1-10-01	5/8 (15.9)				
BHL1-12-01	BHDL1-12-01	BHC1-12-01	3/4 (19.1)				
BHL1-14-01	BHDL1-14-01	BHC1-14-01	7/8 (22.2)				

Part available in V-0 material by special order. To order, replace -01 with -19.