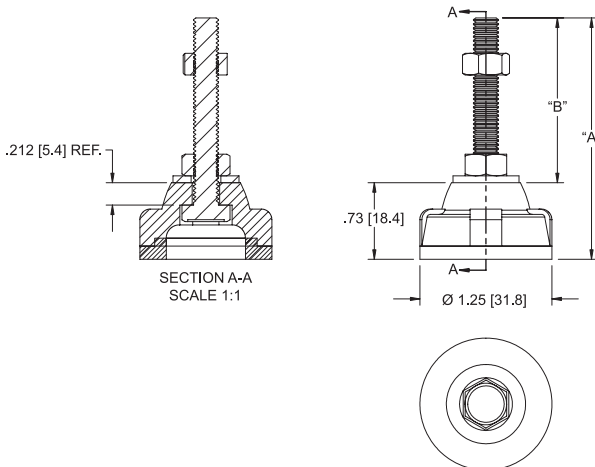
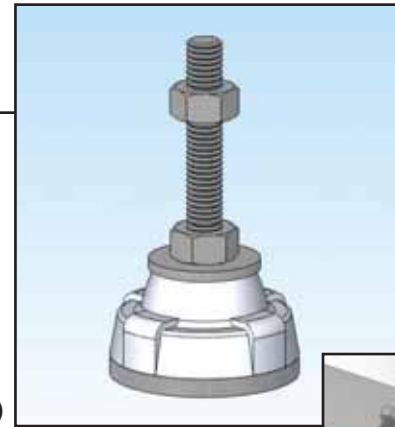


Introducing the **LLF**— Leg Leveling Foot

Features and Benefits

- Innovative design allows simple manual leveling by turning the foot under the weight of the appliance
- Maximum load is 56 lbs. (25 kg.)
- Co-molded with two engineered thermoplastic materials that combine the elasticity of Thermoplastic Elastomer (TPE) and the durability and strength of Polypropylene (PP)
- Allows precise leveling of appliances due to uneven floor surfaces
- PP base provides durable contact with the floor and prevents damage to the floor
- TPE foot provides vibration control and isolates structural noise
- 18-8/A2 Stainless Steel Hardware included is RoHS Compliant and meets/exceeds ASTM, DIN, and ANSI/ASME standards (contact Richco for more information)



Markets

- Furniture
- White Goods
- Brown Goods
- Machinery
- Enclosures

Other Related Richco Product Solutions



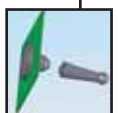
SVF-1



BF



POF



BAB



RBS



TB



SOF



BPM

LLF	Max. Load 56 Lbs. (25 Kg.)		Standard Pack: 40 Feet per Bag
Foot Material: TPE, RMS-262 and PP, RMS-08 Co-molded. Color: Black Hardware Material: M6 Bolt & Nut, A2 Stainless Steel, RMS-370; All other hardware, 18-8 Stainless Steel, RMS-369	"A" Ref.	"B" Ref.	Part Assembly Includes
LLF-1	2.28 (58)	1.56 (39.6)	(1) M6x45 Hex Bolt; (2) M6 Hex Nuts; (1) 1/2x0.04 - 0.05 Washer
LLF-2	2.26 (57.5)	1.54 (39.1)	(1) 1/4-20x1-3/4 Hex Bolt; (2) 1/4-20 Hex Nuts; (1) 5/8x0.04 - 0.05 Washer
LLF-3	N/A	N/A	Foot Only (No Hardware Included)

