

Introducing the *SHR-C*— Harness Wrap Clip

Features and Benefits

- Adjustable clip to hold both SHR-20 & SHR-25 slit harness wrap sizes
- Snap fit and screw mount base versions available
- Internal ribs hold the harness wrap securely
- Locks securely and can be easily reopened for maintenance
- Quick installation

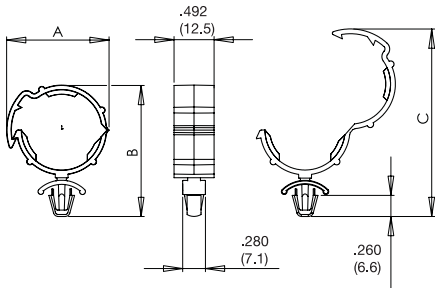
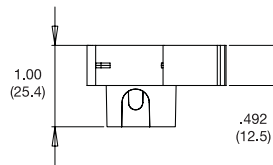
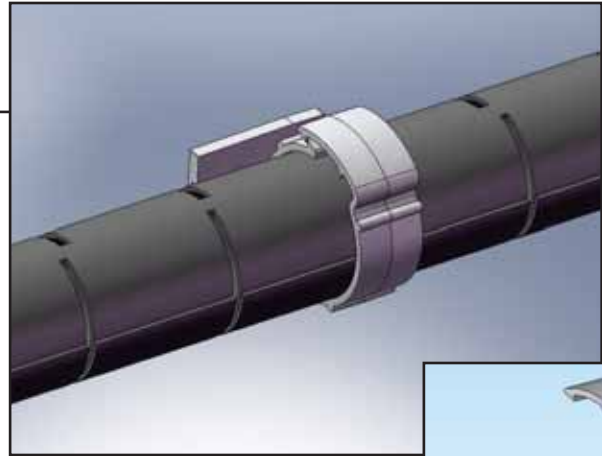


Fig 1

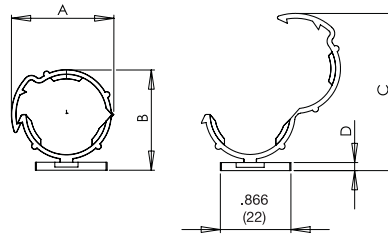


Fig 2

Markets

- General Electronics
- Game Machine Industry
- Vending Machine Industry
- Furniture Market

Material: Nylon 6/6, RMS-01*, Color: Black							
Standard Pack: 500 per bag							
Part No.	"A" Ref	"B" Ref	"C" Ref	"D"	Bundle dia.	Mounting Method	Fig
SHR-C1	1.14 (29)	1.67 (42.5)	2.28 (58)	-	To hold Richco Harness Wrap SHR-20 and SHR-25 sizes	Snap Lock into a .252±.002 (6.4 ± 0.05) Hole in a .031-.079 (0.8-2) Panel	1
SHR-C2	1.18 (30)	1.28 (32.5)	1.85 (47)	.10 (2.5)		M4 or #8 Screw	2

*Parts are available in UL94 V0 material by special order only. To order, add -19 to the end of the part number.

Other Related Richco Product Solutions



SHR



AKKL



HR



N



PAKKL



RWSB



TLH



VM

