



**CLINCH RIVET**

## NEW PRODUCT RELEASE

Richco Inc. introduces a new line of rivets for fastening two or more panels together. The Clinch Rivet (CR) provides a very strong hold and is also removable for environmentally friendly disposal. The CR is lightweight, chemical resistant and has a high dielectric strength. Richco offers four standard colors; black, white, gray, and beige.

### TARGET MARKETS

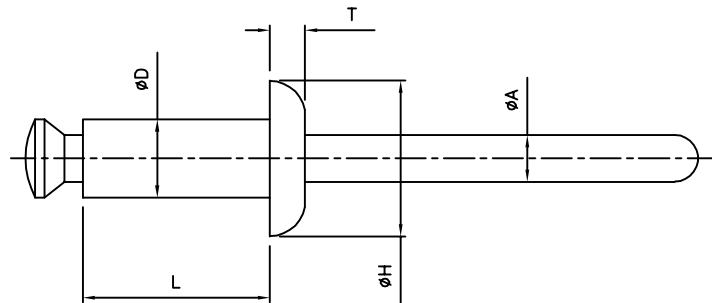
- ELECTRONICS
- FURNITURE
- POINT OF PURCHASE

### PART FEATURES

- Removable
- Light weight
- High dielectric strength
- High sheer strength

### BENEFITS

- Environmentally safe to dispose
- Little added weight to end product
- Insulating
- Strong hold



**Material:** Rivet - Nylon 6, RMS-106; Mandrel - Polycarbonate, RMS-107  
**Colors:** Black - 1, White - 2, Grey - 3, Beige - 4, add corresponding color number to the end of the part number.

Part No.	Mounting Hole Dia.	Panel Thickness	"D" Dia.	"L"	"H" Dia.	"T"	"A" Dia.	Tensile Strength (Yield)	Shear Strength	Standard Pack Quantity
CR32-1	3.3	1.0 - 4.0	3.2	6.4	6.4	1.4	2.1	12kg	20kg	1000
CR32-2		4.0 - 7.0		9.6						
CR32-3		7.0 - 10.0		12.7						
CR40-1	4.1	1.0 - 4.0	4.0	6.4	8.0	1.8	2.4	18kg	25kg	
CR40-2		4.0 - 7.0		9.6						
CR40-3		7.0 - 10.0		12.7						
CR48-1	4.9	1.5 - 5.0	4.8	8.0	9.6	2.0	2.8	28kg	40kg	500
CR48-2		5.0 - 8.0		11.2						
CR48-3		8.0 - 11.0		14.4						
CR56-1	5.7	2.0 - 5.5	5.6	9.6	12.0	2.2	3.4	40kg	65kg	
CR56-2		5.5 - 8.5		12.7						
CR56-3		8.5 - 12.0		15.9						