



Richco®

NEW PRODUCT RELEASE

EASY REMOVAL QUARTER TURN BASE PARTS

Richco is now able to offer 5 of our most successful fasteners with an easily removable, low protrusion quarter turn base.

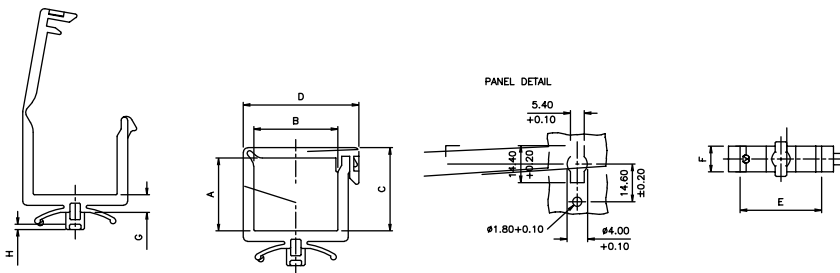
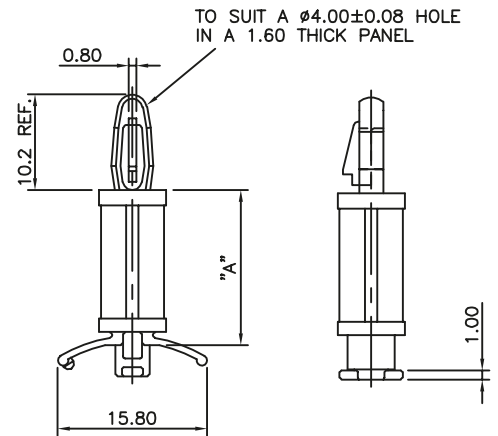


FEATURES:

- Available on LCBS, STL, WS, LWS & WSLT series
- Simply turn 90 degrees to lock into place or release
- Low protrusion base, only 1mm
- Packaged 1000 per bag
- Material: Nylon 6/6

LOCKING CIRCUIT BOARD SUPPORT (QUARTER TURN BASE)

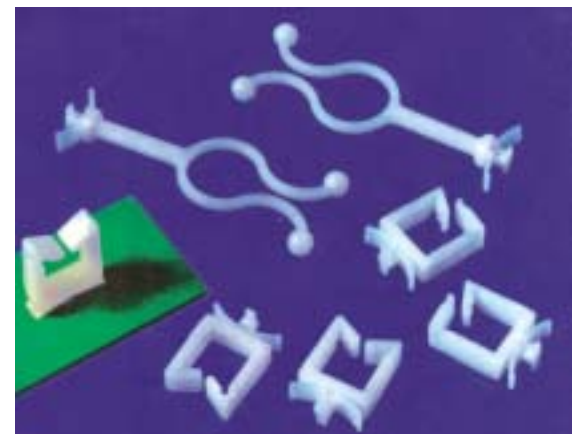
Material: Nylon 6/6, RMS-01 Color: Natural Part Number	Material: Nylon 6/6, RMS-19 Color: Natural Part Number	Standard Pack: 1,000 per bag
		"A" ± .015 (0.4)
LCBS-9-3-01	LCBS-9-3-19	3/16 (4.8)
LCBS-9-4-01	LCBS-9-4-19	1/4 (6.4)
LCBS-9-5-01	LCBS-9-5-19	5/16 (7.9)
LCBS-9-6-01	LCBS-9-6-19	3/8 (9.5)
LCBS-9-7-01	LCBS-9-7-19	7/16 (11.1)
LCBS-9-8-01	LCBS-9-8-19	1/2 (12.7)
LCBS-9-10-01	LCBS-9-10-19	5/8 (15.9)
LCBS-9-12-01	LCBS-9-12-19	3/4 (19.1)
LCBS-9-14-01	LCBS-9-14-19	7/8 (22.2)
LCBS-9-16-01	LCBS-9-16-19	1 (25.4)
LCBS-9-18-01	LCBS-9-18-19	1-1/8 (28.6)
LCBS-9-20-01	LCBS-9-20-19	1-1/4 (31.8)
LCBS-9-22-01	LCBS-9-22-19	1-3/8 (34.9)



WIRE SADDLE LOCKING TOP (QUARTER TURN BASE)

Material: Nylon 6/6, RMS-01 • Color: Natural								
Part No.	Standard Pack: 1000							
	"A"	"B"	"C" Ref.	"D"	"E"	"F"	"G"	"H"
WSLT-9-01A-01	.201 (5.1)	.421 (10.7)	.26 (6.6)	.661 (16.8)	.563 (14.3)	.197 (5.0)	.134 (3.4)	.039 (1.0)
WSLT-9-01-2-01	.358 (9.1)		.441 (11.2)					
WSLT-9-02-1-01	.134 (3.4)	.531 (13.5)	.209 (5.3)					
WSLT-9-02A-1-01	.394 (10.0)	.642 (16.3)	.461 (11.7)					
WSLT-9-03-2-01	.555 (14.1)	.717 (18.2)	.882 (22.4)					
WSLT-9-03-3-01	.854 (21.7)	.709 (18.0)	.933 (23.7)	.949 (24.1)				

Flame Retardant Nylon 6/6, RMS-19 available by special order. To order, replace -01 with -19.



For Free Samples or Literature Please Call
US Headquarters 800-621-1892

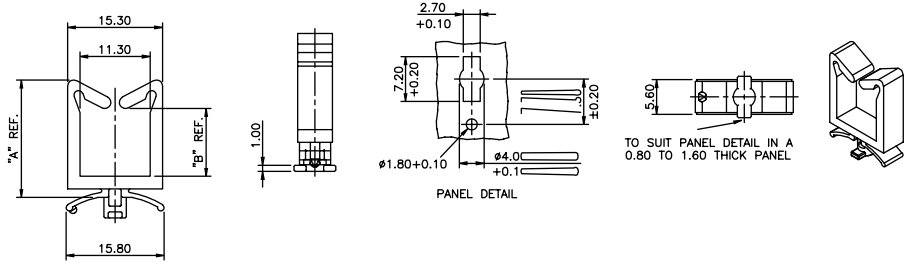
EASY REMOVAL QUARTER TURN BASE PARTS

WIRE SADDLE (QUARTER TURN BASE)

Material: Nylon 6/6, RMS-01 • Color: Natural

Part No.	Standard Pack: 1000	
	"A"	"B"
WS-9-1-01	.512 (13.0)	.189 (4.8)
WS-9-2-01	.740 (18.8)	.390 (9.9)
WS-9-3-01	1.059 (26.9)	.752 (19.1)
WS-9-4-01	1.370 (34.8)	1.071 (27.2)

Flame retardant nylon available by special order. Replace -01 with -19

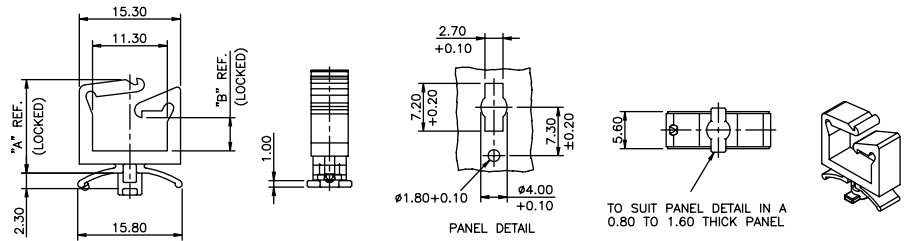


LOCKING WIRE SADDLE (QUARTER TURN BASE)

Material: Nylon 6/6, RMS-01 • Color: Natural

Part No.	Standard Pack: 1000	
	"A"	"B"
LWS-9-1-01	.512 (13.0)	.189 (4.8)
LWS-9-2-01	.740 (18.8)	.386 (9.8)
LWS-9-3-01	1.071 (27.2)	.748 (19.0)
LWS-9-4-01	1.382 (35.1)	1.055 (26.8)

Flame retardant nylon available by special order. Replace -01 with -19



STANDOFF TWIST LOK (QUARTER TURN BASE)

**Material: Nylon 6/6, RMS-01
Color: Natural**

Part No.	Standard Pack: 1000
	"A"
STL-J9-250-4M-01	.157 (4.0)
STL-J9-250-6M-01	.236 (6.0)
STL-J9-250-8M-01	.315 (8.0)
STL-J9-250-10M-01	.394 (10.0)
STL-J9-250-12M-01	.472 (12.0)
STL-J9-250-14M-01	.551 (14.0)
STL-J9-250-16M-01	.630 (16.0)
STL-J9-250-18M-01	.709 (18.0)
STL-J9-250-20M-01	.787 (20.0)
STL-J9-250-22M-01	.866 (22.0)
STL-J9-250-24M-01	.945 (24.0)
STL-J9-250-26M-01	1.024 (26.0)

Flame Retardant Nylon, RMS-19 available by special order.
To order, replace -01 with -19.

