



# Richco®

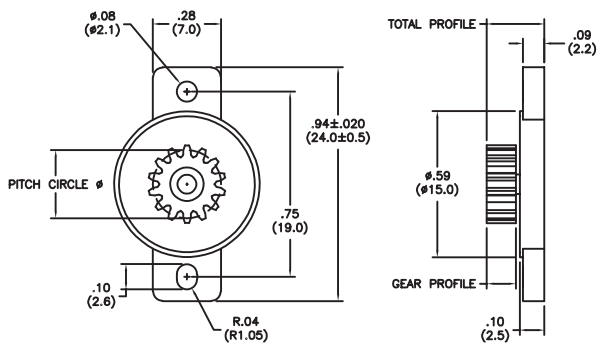
## ROTARY DAMPERS - RFRT SERIES



### ROTARY DAMPERS - RFRT SERIES

### NEW PRODUCT RELEASE

Richco Inc. introduces a whole new line of rotary dampers (RFRT-G2 series and RFRT-PN series). Rotary dampers are gear-like devices designed to limit the movement of a moving piece of equipment. Found in many different industries like furniture, cabinets, automotive and most prevalently in the electronics industry (i.e. CD door or tray opens slowly). The rotary damper contains different grades or blends of silicone to produce varying torque values to offer specific limitations or speeds of the moving piece. The RFRT-G2 series offers three different gear types for various application requirements. There are also many configurations of mounting the rotary dampers. Richco offers 2 versions at this time as standard options. As always, Richco is looking for your specialty applications.



RFRT-G2

Material: Body and Cop - 94HB Polycarbonate (PC), Rotating Shaft and Gear - 94HB Polyoxymethylene	
Part No.	Standard Pack: 1000 Torque (gf.cm) @20 RPM @ 23°C
RFRT-G2-200G*	20 $\pm$ 5
RFRT-G2-300G*	30 $\pm$ 8
RFRT-G2-450G*	45 $\pm$ 10
RFRT-G2-600G*	60 $\pm$ 12
RFRT-G2-101G*	100 $\pm$ 20

GEAR*	GEAR SPECIFICATION		
	1	2	3
Type	Standard Spur	Standard Spur	Standard Spur
Tooth Profile	Involute Gear	Involute Gear	Involute Gear
Pressure Angle	20°	20°	20°
No. of Teeth	14	10	11
Grade	JIS 6	JIS 6	JIS 6
Pitch Circle Dia.	$\phi .28$ (7.0)	$\phi .39$ (10.0)	$\phi .35$ (8.8)
Gear Profile	.15 (3.7)	.12 (3.0)	.14 (3.6)
Total Profile	.26 (6.6) REF.	.23 (5.9) REF.	.26 (6.5) REF.

### TARGET MARKETS

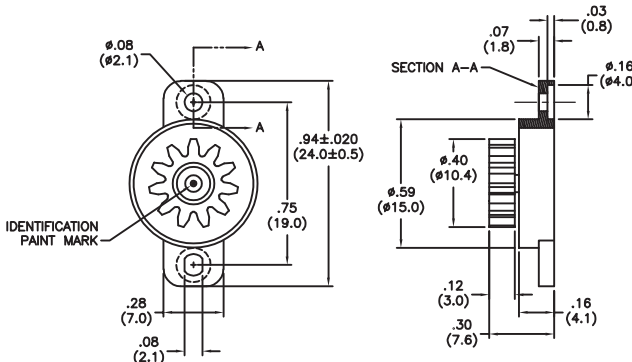
- ELECTRONICS
- FURNITURE
- AUTOMOTIVE SUPPLIERS

### PART FEATURES

- Three gear types available
- Many different torque values available

### BENEFITS

- Many gear types to choose from
- Accommodates varying moving piece weights and sizes



RFRT-PNX

Material: Body and Cop - 94HB Polycarbonate (PC), Rotating Shaft and Gear - 94HB Polyoxymethylene		
Part No.	Standard Pack: 1000	
	Torque (gf.cm) @20 RPM & 23°C	Paint Mark
RFRT-PN3	25 $\pm$ 7	White
RFRT-PN4	40 $\pm$ 10	Yellow
RFRT-PN5	80 $\pm$ 15	Green
RFRT-PN6	120 $\pm$ 15	—

GEAR SPECIFICATIONS	
Type	Standard Spur
Tooth Profile	Involute Gear
Pressure Angle	20°
Number of Teeth	11
Pitch Circle Dia.	$\phi .35$ (8.8)
Grade	JIS 6