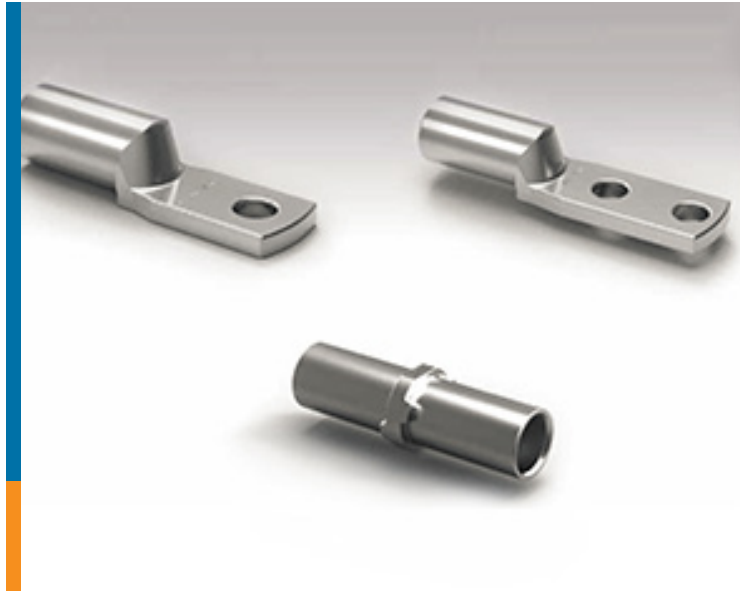


INTRODUCING COPALUM LITE SEALED TERMINALS & SPLICES

- Reduce weight with terminals that are up to 60% lighter than copper terminals
- Enable an efficient, reliable and clean crimp process



TE Connectivity (TE) introduces COPALUM Lite sealed terminals and splices. These rugged, sealed terminals weigh 60% less than legacy designs due to an aluminum versus copper-based material. Whether used in power or grounding applications, TE's COPALUM Lite sealed terminals and splices feature the same dry crimp technology that has provided over 30 years of reliable connectivity to the aerospace industry, but now at a 60% weight reduction compared to traditional terminals and splices.

BENEFITS

- Reduce weight with aluminum based terminals that are up to 60% lighter than copper terminals
- Enable an efficient, reliable and clean crimp process with proven COPALUM dry crimp technology
- Save time by crimping and sealing the terminal to wire in a single crimp operation
- Benefit from a flexible product design with a large variety of product geometries
- Enhance efficiency by using an improved wire barrel design with a generous lead-in providing ample room for inserting conductors

APPLICATIONS

- Primary power feeder connections
- Grounding Applications

ELECTRICAL

- 600 Volts, AC
- Rated Current:

Wire & Terminal Size	Rated Current (Amperes)
2 AWG	152
1/0	202
2/0	235
3/0	275
4/0	303

MATERIALS

- Base Material: Aluminum
- Finish: Tin over nickel plating

COPALUM, TE Connectivity and TE connectivity (logo) are trademarks

MECHANICAL

- Crimp Tensile:

Wire & Terminal Size	Crimp Tensile Strength (Min)
2 AWG	375 lbs. (1668 N)
1/0	675 lbs. (3003 N)
2/0	825 lbs. (3670 N)
3/0	975 lbs. (4337 N)
4/0	1,125 lbs. (5004 N)

- Temperature Rating: 175°C
- Salt Spray: 500 Hours
- Sealed Crimp: 80 PSI

STANDARDS & SPECIFICATIONS

- Application Specification 114-32098
- Product Specification 108-32088
- Application Tooling Instruction Sheet 408-32087

TE's aluminum COPALUM sealed terminals & splices are compatible with many cable constructions, including:

- BMS 13-60
- BMS 13-78
- ABS0949 (AD)
- ASNE0438 (YV)
- MIL-SPEC

LEARN MORE

[COPALUM Lite Brochure](#)

[COPALUM Lite Sealed Terminals & Splices Product Selector Page](#)

[COPALUM Lite Press Release](#)

[COPALUM Parts List](#)

Insert TE Authorized
Distributor logo here

